

Finally! Brand-New, Affordable Starter Cabins!

Cabin #2 Under Construction Soon!

**3408
Pelican Ave.,
Island Park, ID**

Due to finish construction by Thanksgiving, this will be a 2 bedroom, 2 bathroom cabin with a fireplace and a great location! You could walk right out of your front door to fish in world-famous trout waters!

**Asking Price
\$209,000⁰⁰**



This photograph is of a cabin with the same floor-plan. The cabin at 3414 Pelican Avenue will look nearly identical to this, except it will not have an attached garage.

This two-story cabin will be a cozy, comfortable home. It is approximately 1,800 square feet. If you act now, before construction has progressed too far, you can add on a back deck or a 3rd floor playroom (which would be located above the 2nd floor bedroom).

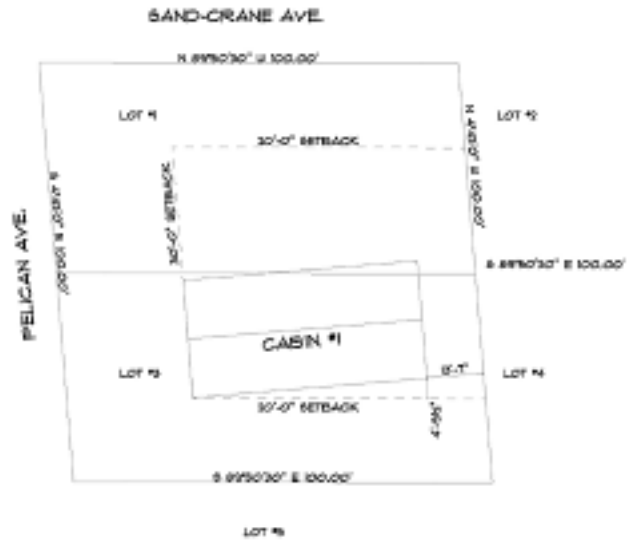
Also, if you purchase soon, you will have allowances for the following:

- tile floors,
- carpeting,
- counter tops,
- cabinets,
- fireplace rock, and
- rock on the exterior.

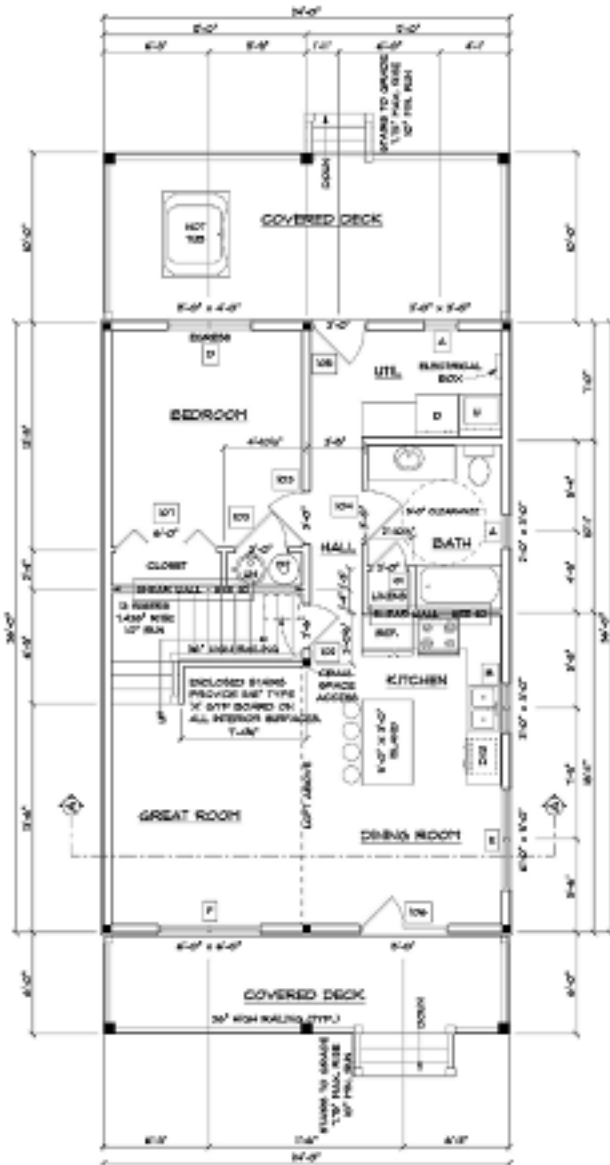
These photographs are of a finished cabin with the same floor-plan. The cabin at 3414 Pelican Avenue will look nearly identical to this (not including furniture and decorations).



View
From
The Lot

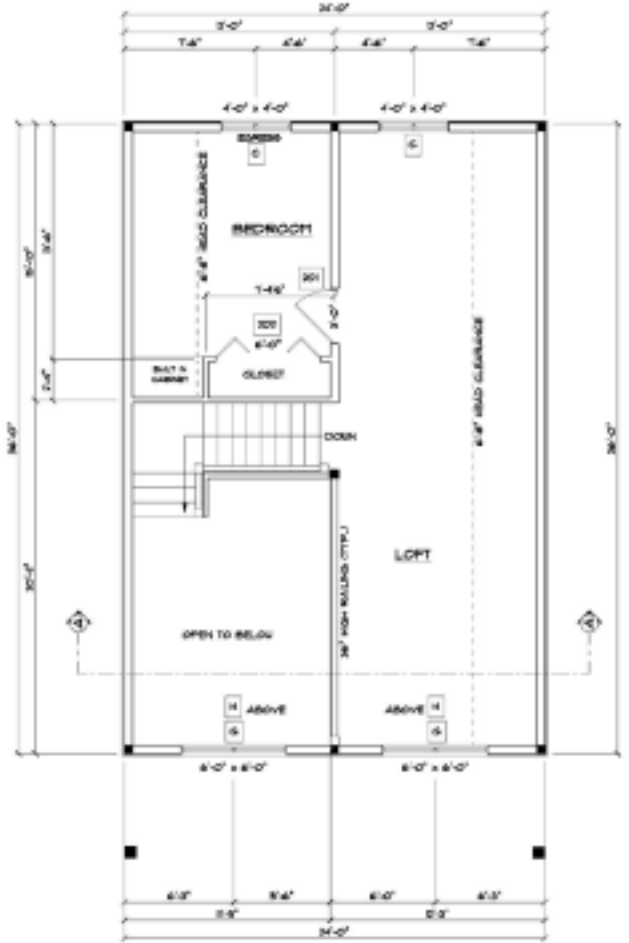


SITE PLAN



MAIN FLOOR PLAN

W4' x 1'-0" LIVING SPACE + 264 SQ. FT. DECK + 480 SQ. FT.



SECOND FLOOR PLAN

W4' x 1'-0" LIVING SPACE + 638 SQ. FT.

Ph. 208-589-3465
Fax 208-522-7742



865 Pancheri
Idaho Falls, ID 83402